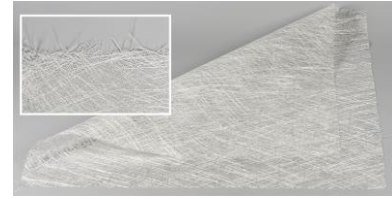


## REINFORCEMENT MAT GL



- > increases tensile and bending strength
- > alkali-resistant glass fabric

### Product description

Alkali-resistant textile glass mat for tempering and reinforcing filling and levelling compounds, serves to increase the tensile and flexural strength as well as the impact strength (crack behaviour). For critical substrates like wooden floor boards, mastic asphalt, chipboard, dry screeds, brittle and cracks screeds or transitions between different building materials.

#### Delivery format

Container	Outer packaging	Pallet
90 M2 / ROL	-	24 ROL
79.8 M2 / ROL	-	24 ROL

#### Storage

Can be stored frost-free, cool, and dry on wooden shelves in the unopened original container for 0 days

### Processing

#### Processing

Unroll the GL reinforcement mat on the pre-treated substrate and cut to length with an overlap of 1-2 cm. The levelling compound is stirred according to the manufacturer's guidelines and then poured on. It is recommended to compact and to ventilate the levelling compound with a spiked roller. When walking on and when pouring out with subsequent distribution of the levelling compound, possibly fix the mat to the floor beforehand. The fabric does not float and no fibres stick out, the surface is smooth as usual. No impairment of the absorbency!

### Technical data

Colour	white
Surface weight	120 g/m <sup>2</sup>
E-module	72,000 N/mm <sup>2</sup>
Water absorption	less than 0.1 %

## Substrate

### Suitable substrates

Suitable on wooden floor boards, mastic asphalt, chipboard, cement and anhydrite screeds, dry screeds and plaster.

Not suitable on plastic.

The substrate must be dry, frost-free, solid, weight-bearing, dimensionally stable, free of dust, dirt, oil, grease, release agents and loose parts, and it must comply with the applicable technical national and European directives, standards and "generally accepted rules of the trade".

## Product and processing instructions

### Material information:

- When working outside the ideal temperature and/or humidity range, the material properties may change significantly.
- Temper materials accordingly before processing!
- To retain the product properties, no foreign materials may be mixed in!
- Water dosing amounts or thinning specifications must be precisely kept!
- Check coloured products before use for colour accuracy!
- Colour consistency can only be guaranteed within a batch.
- The colouring is significantly influenced by the environmental conditions.

### Environmental advice:

- Do not process at temperatures below +15 °C!
- The ideal temperature range for material, substrate, and air is +15 °C to +25°C.
- The ideal air humidity range is between 40% to 60%.
- Increased humidity and/or lower temperatures delay, lower air humidity and/or higher temperatures accelerate drying, setting, and hardening.
- Ensure sufficient ventilation during the drying, reaction, and hardening phase; avoid draughts!
- Protect from direct sunlight, wind, and weather!
- Protect adjacent components!

### Tips:

- We recommend using a test surface first or a small area for initial, small-scale testing.
- Observe the product data sheets of all MUREXIN products used in the system.
- Keep a genuine original container of the respective batch for later repair work.

The information provided reflects average values that were obtained under laboratory conditions. Due to the use of natural raw materials, the indicated values of individual deliveries may vary slightly without impacting the product suitability.

## Safety instructions

This leaflet is based on extensive experience, is intended to convey the best of our knowledge, is not legally binding and does neither constitute a contractual legal relationship nor a subsidiary obligation resulting from the bill of sale. The quality of our materials is guaranteed within the framework of our general terms and conditions. Our products may be used by professionals and/or experienced and accordingly technically skilled persons only. Users are not released from inquiring in case of uncertainties or from rendering professional workmanship. We recommend using a test surface first or a small area for initial, small-scale testing. Naturally, it is not possible to describe or foresee all possible current and future uses and peculiarities. Information that is assumed to be familiar to experts has been omitted.

Please observe the current, technical, national and European standards, guidelines and data sheets regarding materials, substrates and the subsequent construction. Please contact us if you have any reservations or doubt.

This version is rendered invalid if a new version is released. The most recent data sheets, safety data sheets and the terms and conditions are available online at [www.murexin.com](http://www.murexin.com).